

State of Wyoming Corner Record

(In compliance with the *CORNER PERPETUATION AND FILING ACT*, Wyoming Statutes, 1997 Section 33-29-140 et. seq., and the Rules and Regulations of the Board of Professional Engineers and Professional Land Surveyors)

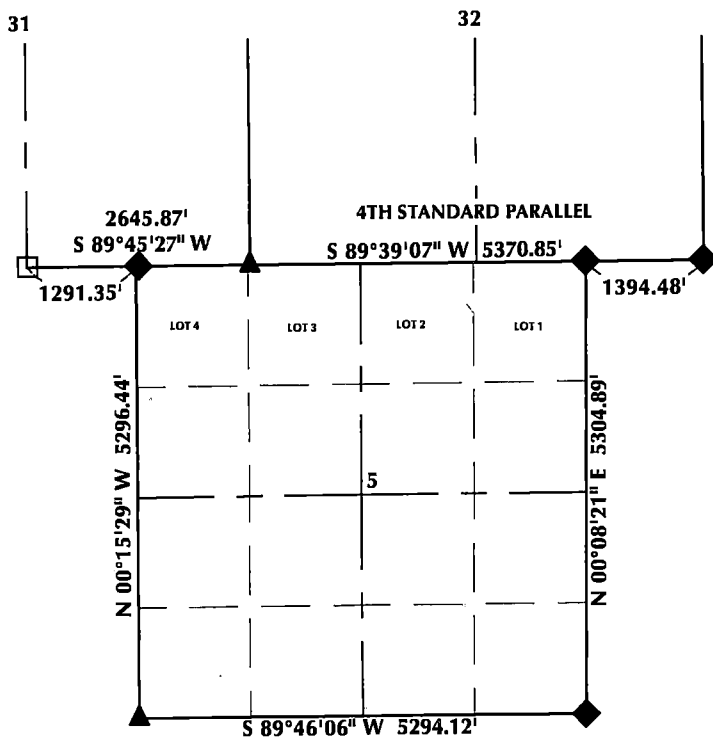
Reverse side of this form may be used if more space is needed.

Record of original survey and citation of source of historical information (if corner is lost or obliterated). Description of corner monumentation evidence found and/or monument and accessories established to perpetuate the location of this corner. Sketch of relative location of monument, accessories, and reference points with course and distance to adjacent corner(s) (if determined in this survey). Method and rationale for reestablishment of lost or obliterated corner.

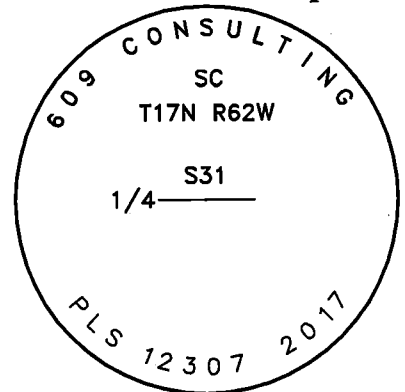
FOUND: 1 1/2" pipe with no cap level with the surface of County Road 227.

SET: Removed pipe and set 2 1/2" aluminum cap, stamped PLS 12703, on #5 rebar 10" below County Road 227.

Monument Location



Monument Inscription



NOTES:

1. ▲ INDICATES FOUND BRASS CAP
2. ● INDICATES FOUND ALUMINUM CAP
3. ◆ INDICATES SET ALUMINUM CAP
4. ■ INDICATES FOUND STONE
5. □ INDICATES SECTION CORNER PER CORNER RECORD
6. BASIS OF BEARING DERIVED FROM WYOMING COORDINATE SYSTEM NAD83 EAST ZONE
7. ALL MEASURED DISTANCES ARE GRID
8. DRAWING NOT TO SCALE



Date of Field Work: 8/9/17

Office Reference: 17-53

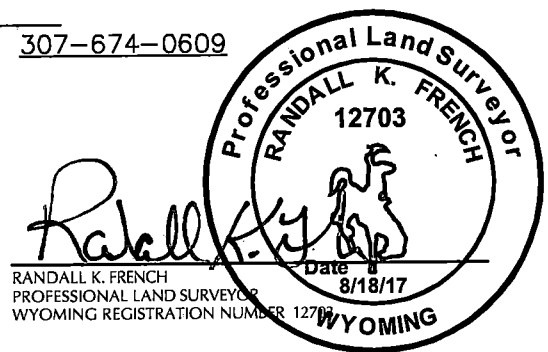
Cross Index Plat

	1	2	3	4	5	6	7	8	9	10	11	12	13	14	15	16	17	18	19	20	21	22	23	24	25
A					●																				
B																									
C			6		5			4			3			2											
D																									
E																									
F																									
G			7		8			9			10			11											
H																									
J																									
K																									
L			18		17			16			15			14											
M																									
N																									
O																									
P			19		20			21			22			23											
Q																									
R																									
S																									
T			30		29			28			27			26											
U																									
V																									
W																									
X			31		32			33			34			35											
Y																									
Z																									

Land Surveyor/Firm/Address

609 Consulting, LLC
1095 Saberton Avenue
Sheridan, WY 82801
 Telephone Number: 307-674-0609

This corner record was prepared by me or under my direction and supervision.



RECORDED 9/5/2017 AT 10:38 AM BK# 2557 PG# 632
 Debra K. Lee, CLERK OF LARAMIE COUNTY, WY PAGE 1 OF 1

RECP #: 715186

Corner Name: South 1/4 Corner Section 31, T17N, R62W, 6th P.M. County: Laramie Wyoming

T16N R62W
 Cross-Index No.: A-4-5

SBRPEPLS/PLSW: March 1994; PLSW January 1998